

2024 VIZIENT CONNECTIONS SUMMIT

vizient.

REFLECTION

REFLECT | ADAPT | EVOLVE

Improving Health Equity Among Human Trafficking Victims: One Hospital's Approach

Mary Sheree Stephens, RN, MSN, AVP, Quality and Health Equity, Ochsner LSU Health

Chasity Teer, BSN, RNC-OB, Chief Nursing Officer, Ochsner LSU St. Mary Medical Center

REFLECTION

Disclosure of Financial Relationships



Vizient, Inc., Jointly Accredited for Interprofessional Continuing Education, defines companies to be ineligible as those whose primary business is producing, marketing, selling, re-selling, or distributing healthcare products used by or on patients.

An individual is considered to have a relevant financial relationship if the educational content an individual can control is related to the business lines or products of the ineligible company.

No one in a position to control the content of this educational activity has relevant financial relationships with ineligible companies.

REFLECTION

Learning Objectives

- Explain how human trafficking is a healthcare crisis.
- Describe how clinicians and hospitals are essential to ensure the safety of human trafficking victims.

Improving Health Equity Among Human Trafficking Victims: One Hospital's Approach

Mary Sheree Stephens, RN, MSN, AVP, Quality and Health Equity, Ochsner LSU Health

Chasity Teer, BSN, RNC-OB, Chief Nursing Officer, Ochsner LSU St. Mary Medical Center

REFLECTION

Human Trafficking

- Human Trafficking is the recruitment, transportation, transfer and harbors persons by means of threat or use of force, coercion, fraud or deception to exploit a person into labor or sexual exploitation
- \$150 billion/year industry
- 199,000 estimated victims in the United States annually
- Estimated 88% of trafficking victims seek healthcare assistance at least once during trafficking episode

After drug dealing, human trafficking is tied with the illegal arms trade as the second largest criminal industry in the world, and it is the fastest growing.

2022 Louisiana Incidents

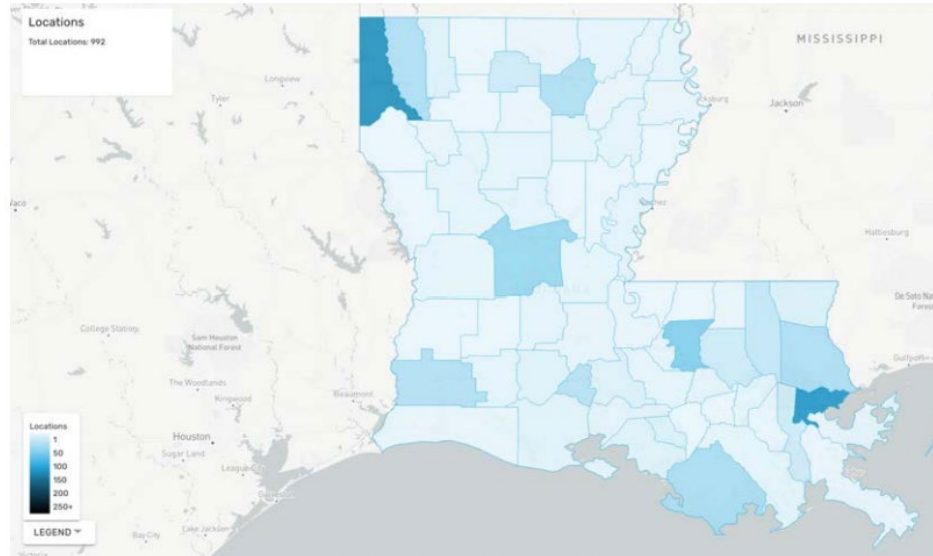
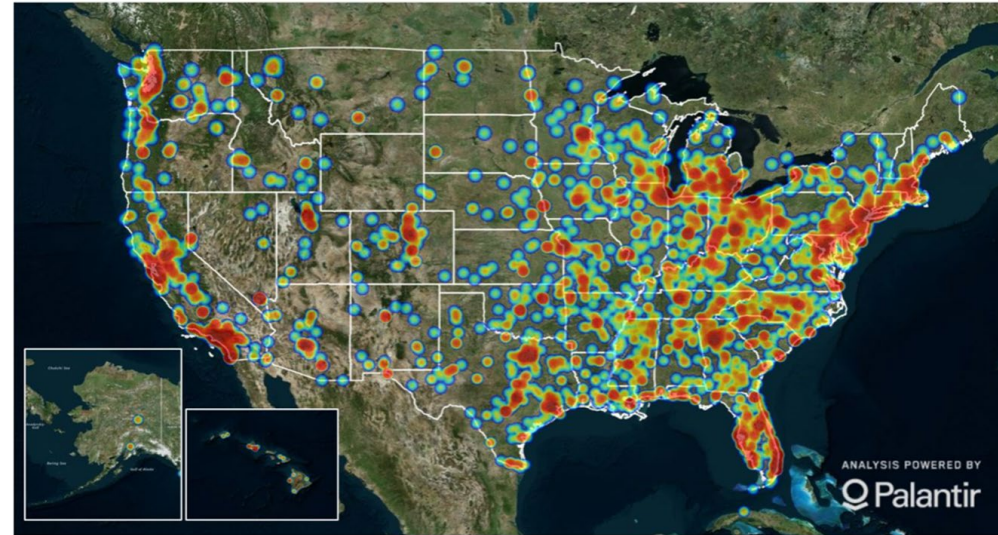


Figure 11. Parish of Trafficking - All Ages, 2022

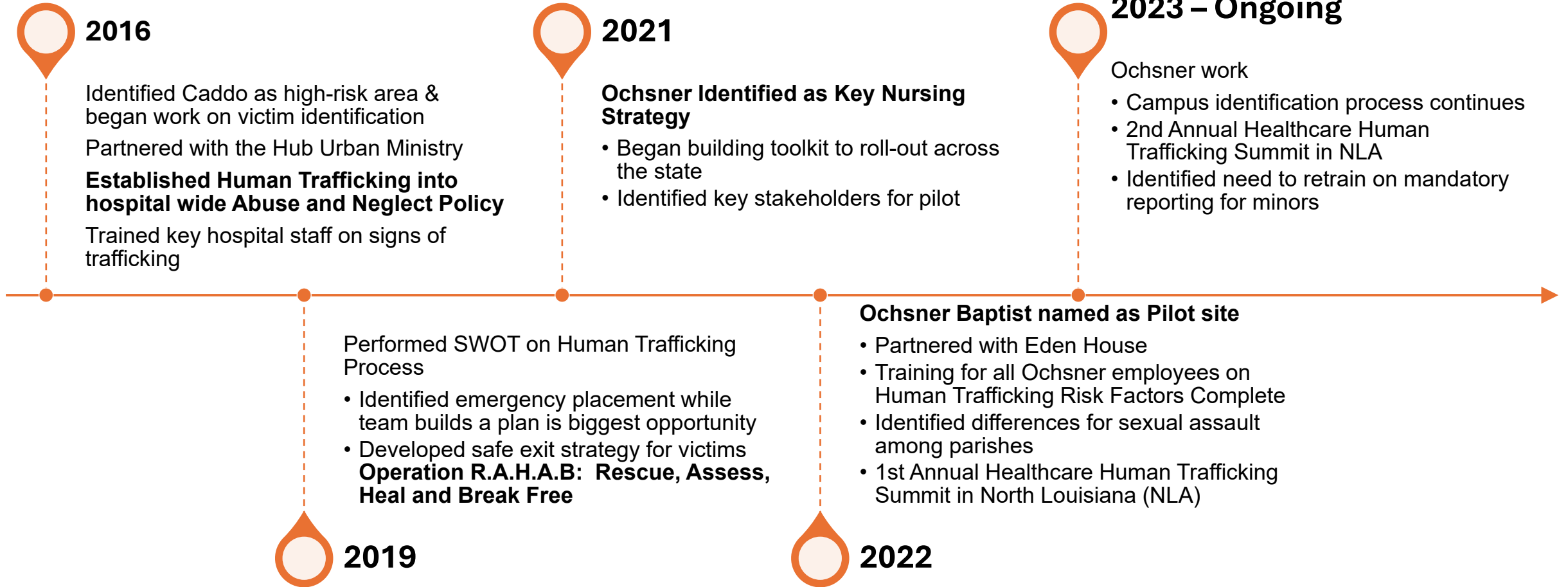
LOCATIONS OF HUMAN TRAFFICKING SITUATIONS IN 2019



Age	Unknown	Caddo	Orleans	East Baton Rouge
Adult (18+)	65 (22%)	26 (9%)	59 (20%)	19 (6%)
Juvenile (17 down)	98 (14%)	120 (12%)	53 (8%)	40 (6%)

Source: Louisiana Human Trafficking Report 2023 <https://humantrafficking.la.gov/wp-content/uploads/2023/01/Human-Trafficking-Annual-Data-Report-2023-2022-Data.pdf>

Healthcare Crisis Call to Action and Timeline to Intervention



Statewide Ochsner Health System & Network



5.20

 **Human Trafficking Assistance Organization Locations**

REFLECTION

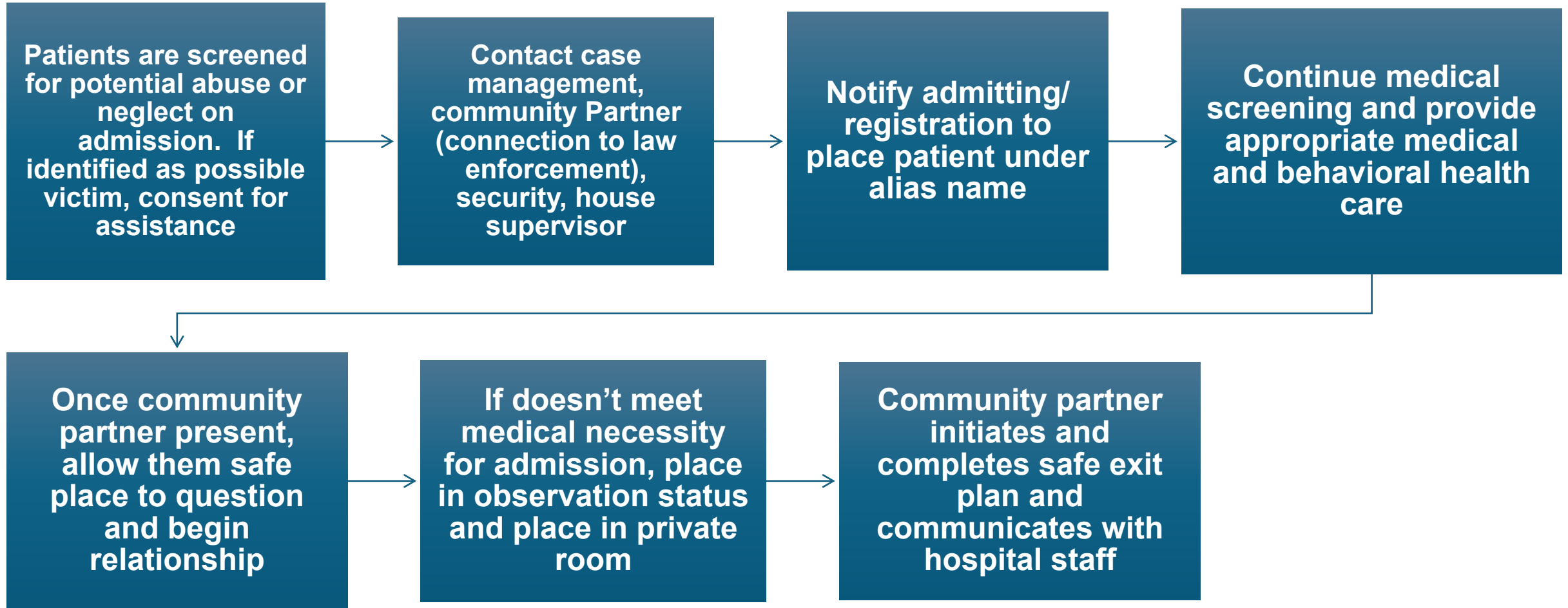
Operation R.A.H.A.B. Rescue, Assess, Heal And Break-Free

This acronym describes the organization's human trafficking recognition and response protocol to improve health equity among trafficking survivors by providing:

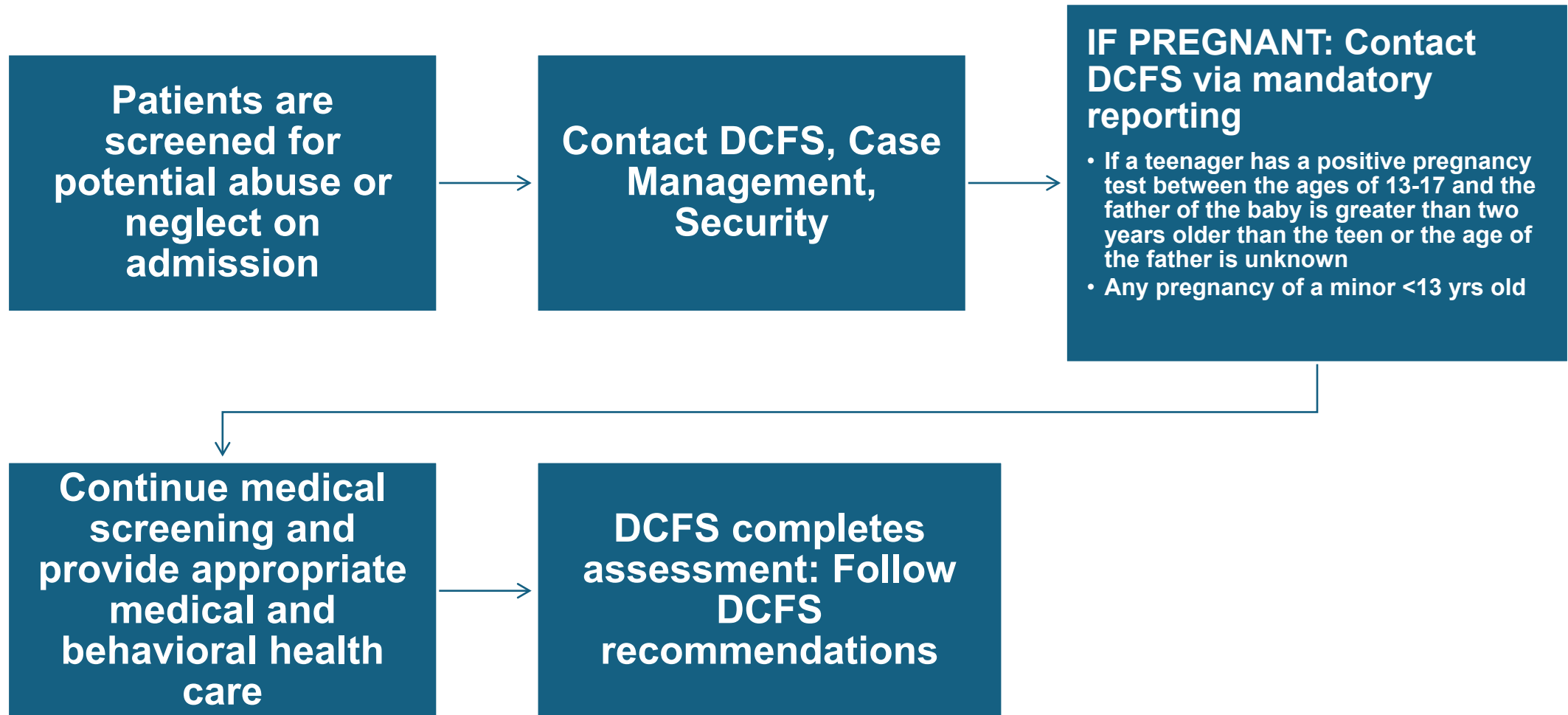
- Time for patient recover from acute trauma
- Safe place in the hospital to receive care
- Connection with a community resource to create an individualized post-discharge care plan to support a better life
- As well as the healthcare needed by the patient



Operation R.A.H.A.B. Process: ADULT



Operation R.A.H.A.B. Process: MINORS



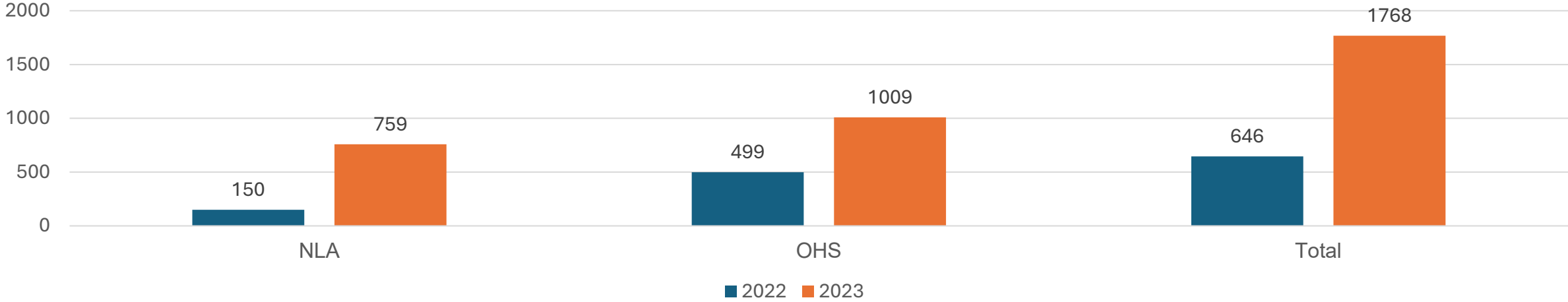
Major Goals and Metrics

- Increasing healthcare providers awareness and symptoms of human trafficking by 40%
 - Compare knowledge of awareness and process for rescuing victims pre- and post- initiation at each organization
- Ensure organizations initiating R.A.H.A.B. program have a defined community partner for true collaboration of post hospital care and support
- Increase extraction of victims from trafficking by 40% after onset of Operation R.A.H.A.B. program

Program Outcomes

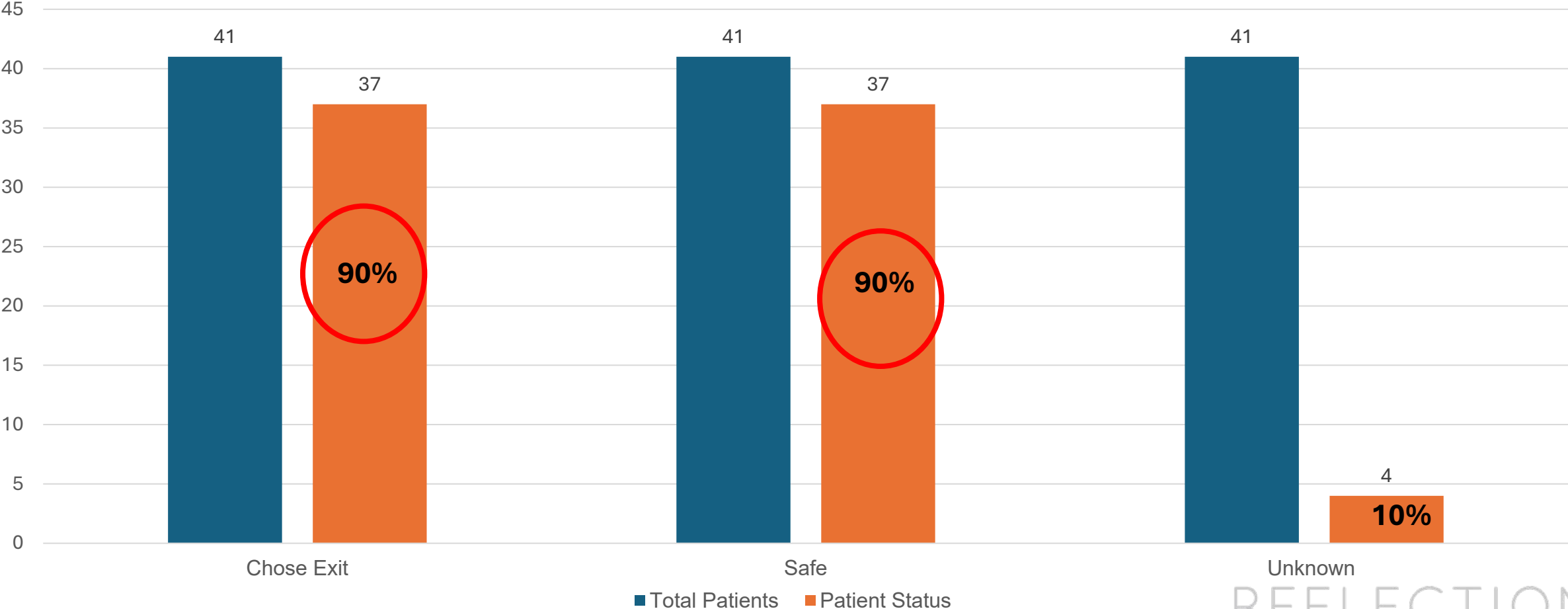
- Improve healthcare provider knowledge of a growing crisis regarding human trafficking
- Successful execution of a system wide project in an integrated health system to spread and scale a local project to an enterprise-wide initiative toward a common goal
- Ensure victims of trafficking receive healthcare free of coercion from a trafficker manipulating a system for their gain
- Ensure victims of trafficking are allowed a time to make choices in a neutral and environment free of crisis
- Confirm appropriate healthcare to victims of trafficking and an extraction plan based off each victim's individual needs

2,414 Healthcare employees educated in 2 years



R.A.H.A.B. Patients

100% of Survivors coming through program remain in a Safe and Thriving Environment



Pt data 10/2021 – 6/2024



Key Improvements Made Through System Collaborative



- Initiated Ochsner Baptist Program and Partnership with Eden House
- Initiated 1st Annual Healthcare and Human Trafficking Summit for North Louisiana (NLA)
- Initiated workflow to flag patients in the program for a funding source of Victims of Crimes Act when appropriate physician coding present
- Developed stronger relationships with NLA partner Purchased with Front –line staff
- Implemented Human Trafficking Education
- Initiated Program to Ensure Minor Reporting
- Educated Outpatient areas in NLA
- Development of EHR workflow
- Development of Education Plan
- Departmental Sign Offs
 - Compliance
 - Legal
 - Nursing
 - Security

REFLECTION

Lessons Learned

- Hospitals are in the prime position to assist in this emerging crisis
 - By CMS mandates we are required to prevent abuse and neglect (human trafficking is abuse and neglect)
 - Studies state that 80 – 90% of victims trafficked receive emergency care services at least once during time trafficked
 - 88% of victims have some form of medical intervention need
 - Repeat sexually transmitted diseases, repeat pregnancy, malnutrition, chronic injuries
 - Can provide safe place while exit plan developed
 - Tiered approach may be stronger approach from a state or larger scale



Key Takeaways

- Identify what your policy covers around screening and identifying abuse and neglect patients
- Initiate identification educational opportunities
- Identify what resources you have in your community to assist with post discharge care
- Ensure minors are being screened and reported appropriately

Questions?

vizient.



Contact:

Mary Sheree Stephens, mary.stephens@ochsnerlsuhs.org

Chasity Teer, chasity.teer@ochsnerlsuhs.org

REFLECTION