



# Pulmonary Disease Navigator: Patient Assessment and Education Reduces Length of Stay

## Learning Objectives

- Explain analysis and prevention of readmissions.
- Outline the use of available resources and staff to optimize care for specific populations.

## Methods

PIH Health Whittier Hospital Respiratory Department developed and implemented a pulmonary disease navigator (PDN) program to reduce COPD Readmissions and LOS.

## Lessons Learned

- Spirometry is required to properly diagnosis COPD
- 43% of patients admitted to the hospital for COPD exacerbation showed restrictive or normal spirometry, not consistent with COPD
- Inadequate home regimen, incorrect diagnosis, or poor adherence to care plan resulted in higher COPD readmissions

## Key Takeaway

Proper diagnosis, symptom-based education, and patient-centered discharge planning resulted in positive outcomes for the patient and the organization.

90%

Reduced COPD  
Readmissions

43%

COPD patients may be  
misdiagnosed

18%

Reduced COPD  
Length of Stay



Ron Eickhoff

MBA, RCP, Vice President, Respiratory Services

[Ron.Eickhoff@PIHHealth.org](mailto:Ron.Eickhoff@PIHHealth.org)

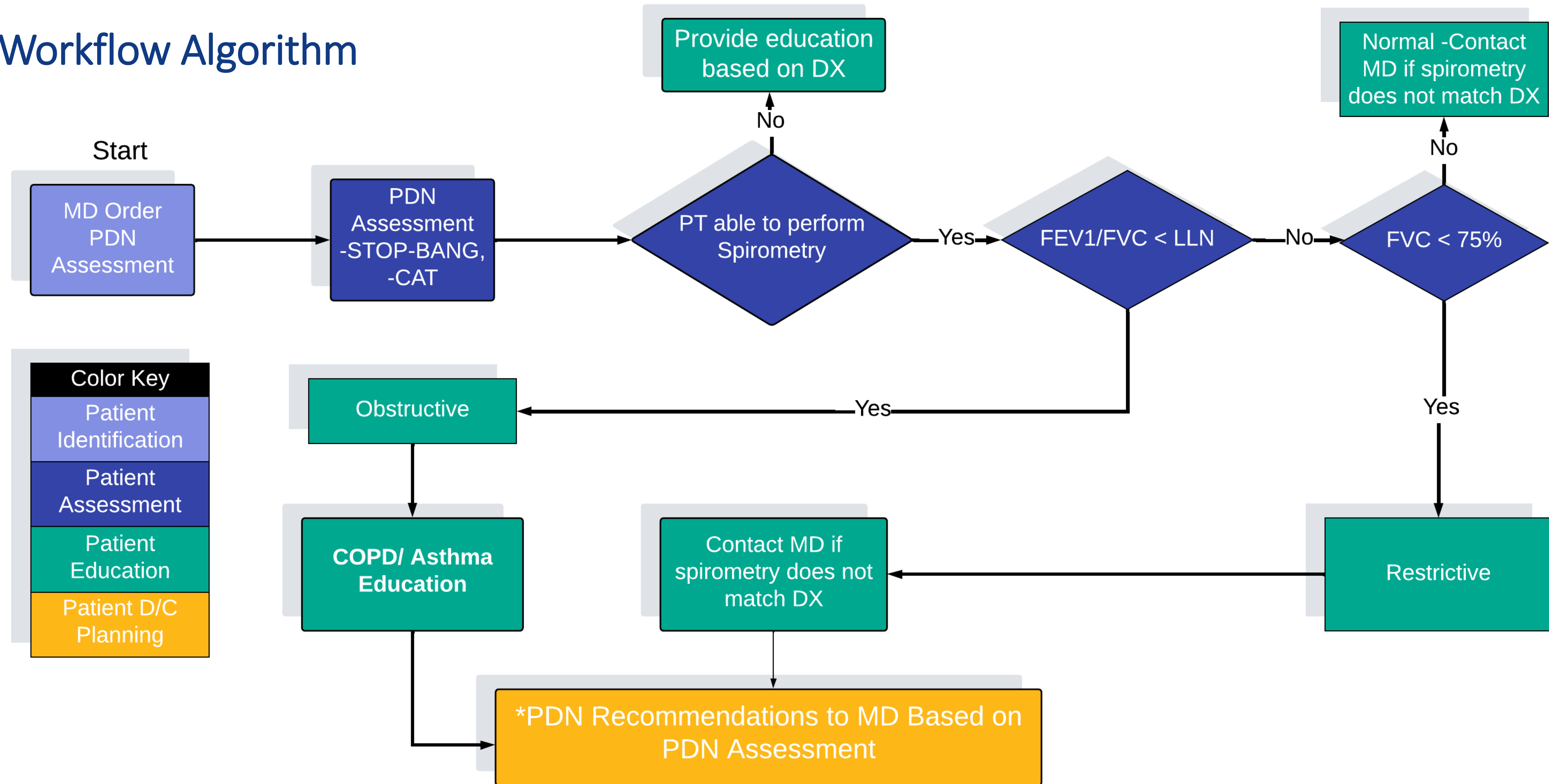
Christopher Smith

MBA, MHA, RRT, RRT-RPFT Respiratory Services

[Christopher.Smith@PIHHealth.org](mailto:Christopher.Smith@PIHHealth.org)

# Pulmonary Disease Navigator: Patient Assessment and Education Reduces Length of Stay

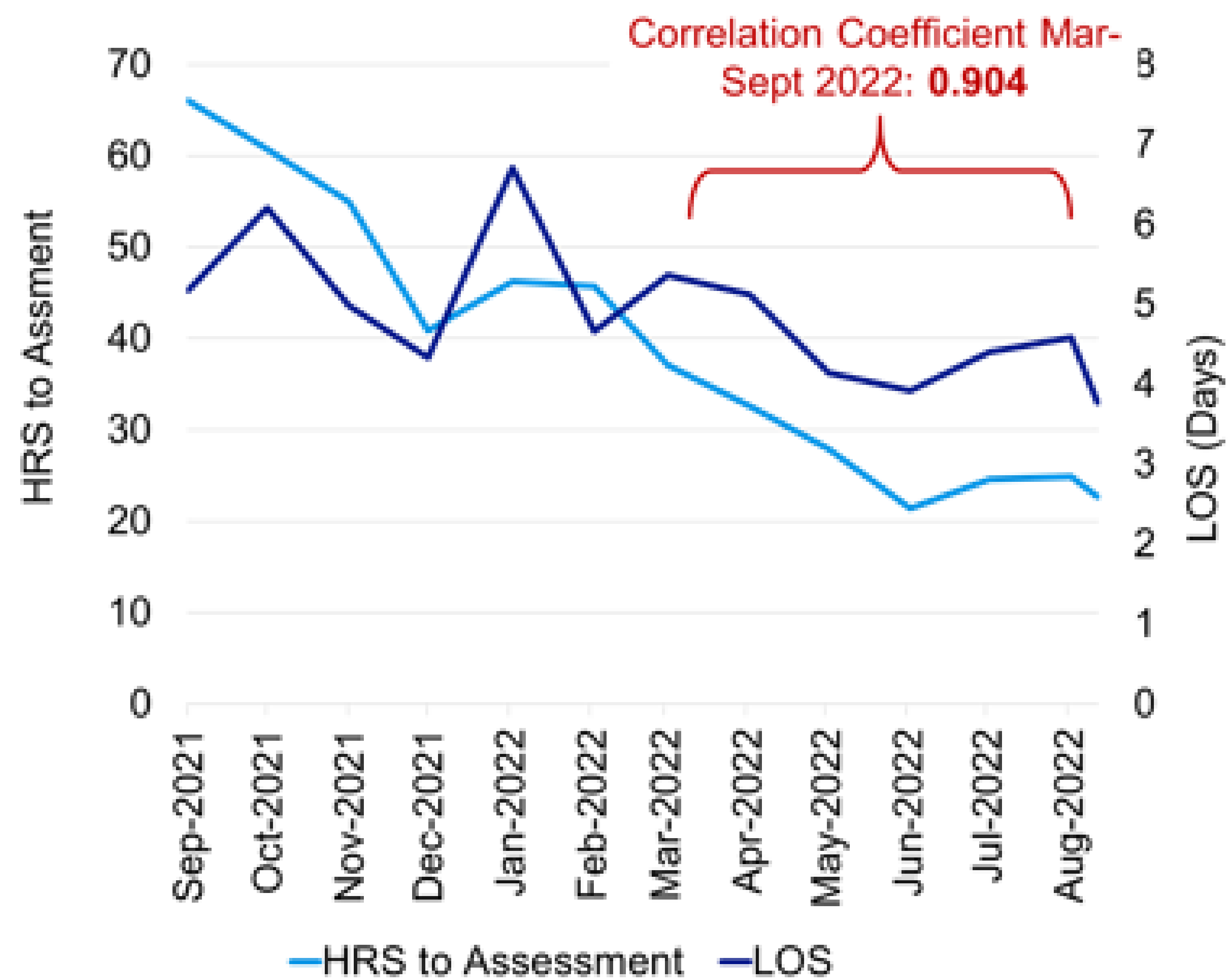
## Workflow Algorithm



# Pulmonary Disease Navigator: Patient Assessment and Education Reduces Length of Stay

## Outcomes and Impact

Correlation Between Early Assessment and LOS



Spirometry Results

