

Surviving the Intensive Care Unit: Now What?

Simrit Bhullar, MD, CCRC Physician Director; Sarah Solis, CNP, CCRC Lead APP; Angela Harding, Pharm D, CCRC Pharmacist



Objectives

- Describe follow-up and coordination of care for patients after a critical care admission
- Assess the need for post-ICU follow-up
- Identify action items that may reduce readmissions in the pulmonary and critical care patient population.

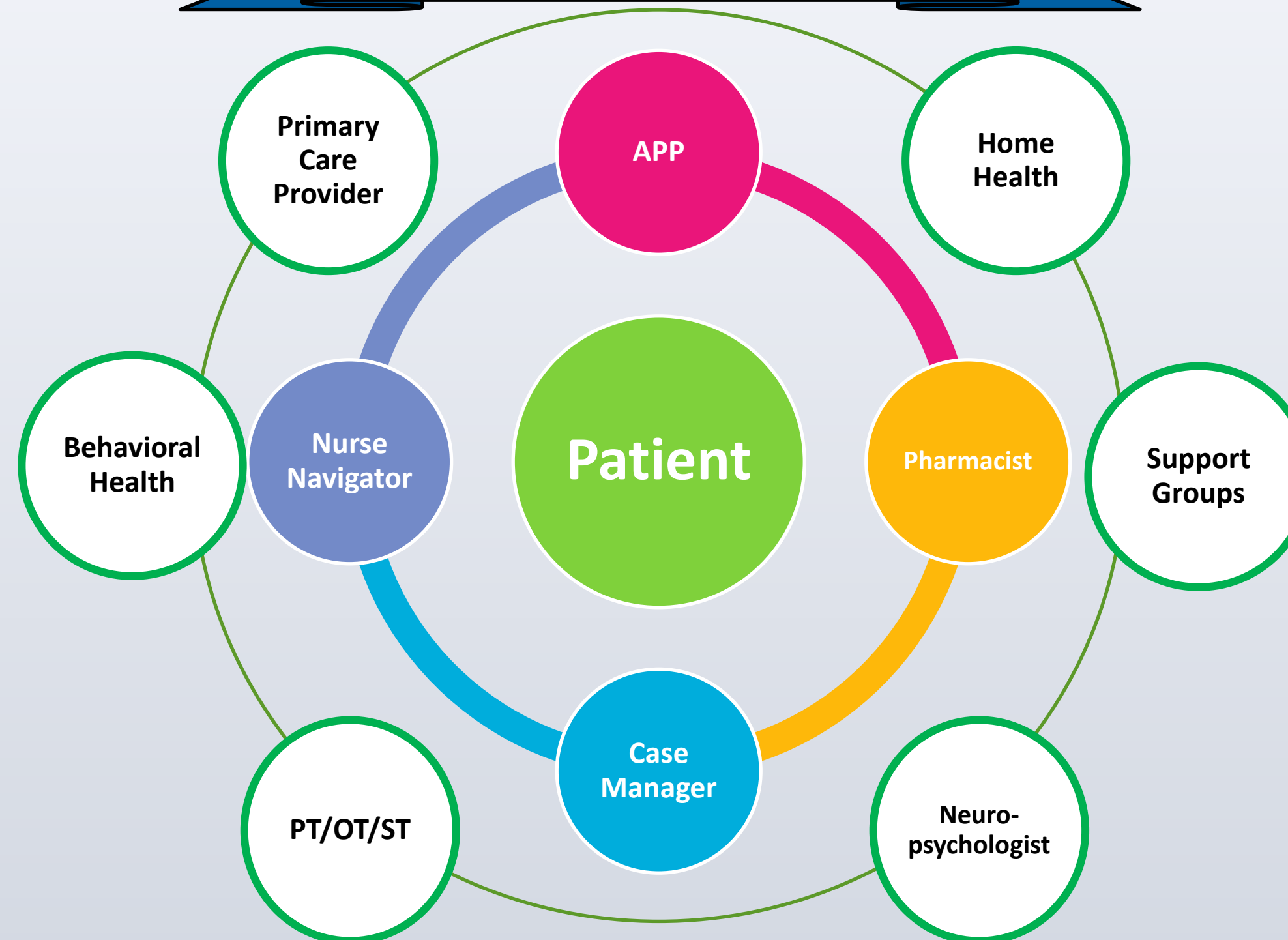
Background

- Patients have increased short term survival, but decreased long term quality of life
- Cognitive, psychologic, and physical impacts following ICU admission
- PCPs lack time/resources to address these issues
- Impacts caregivers as well
- Post-ICU follow-up clinic established March 2021 to address Post-Intensive Care Syndrome

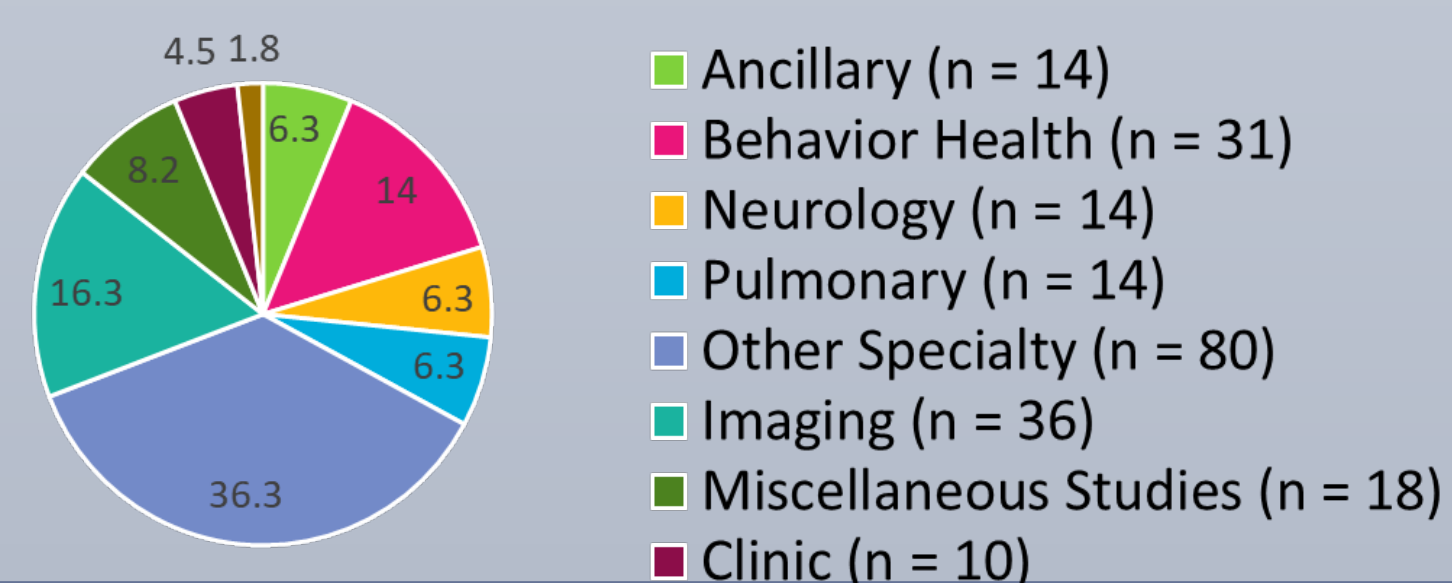
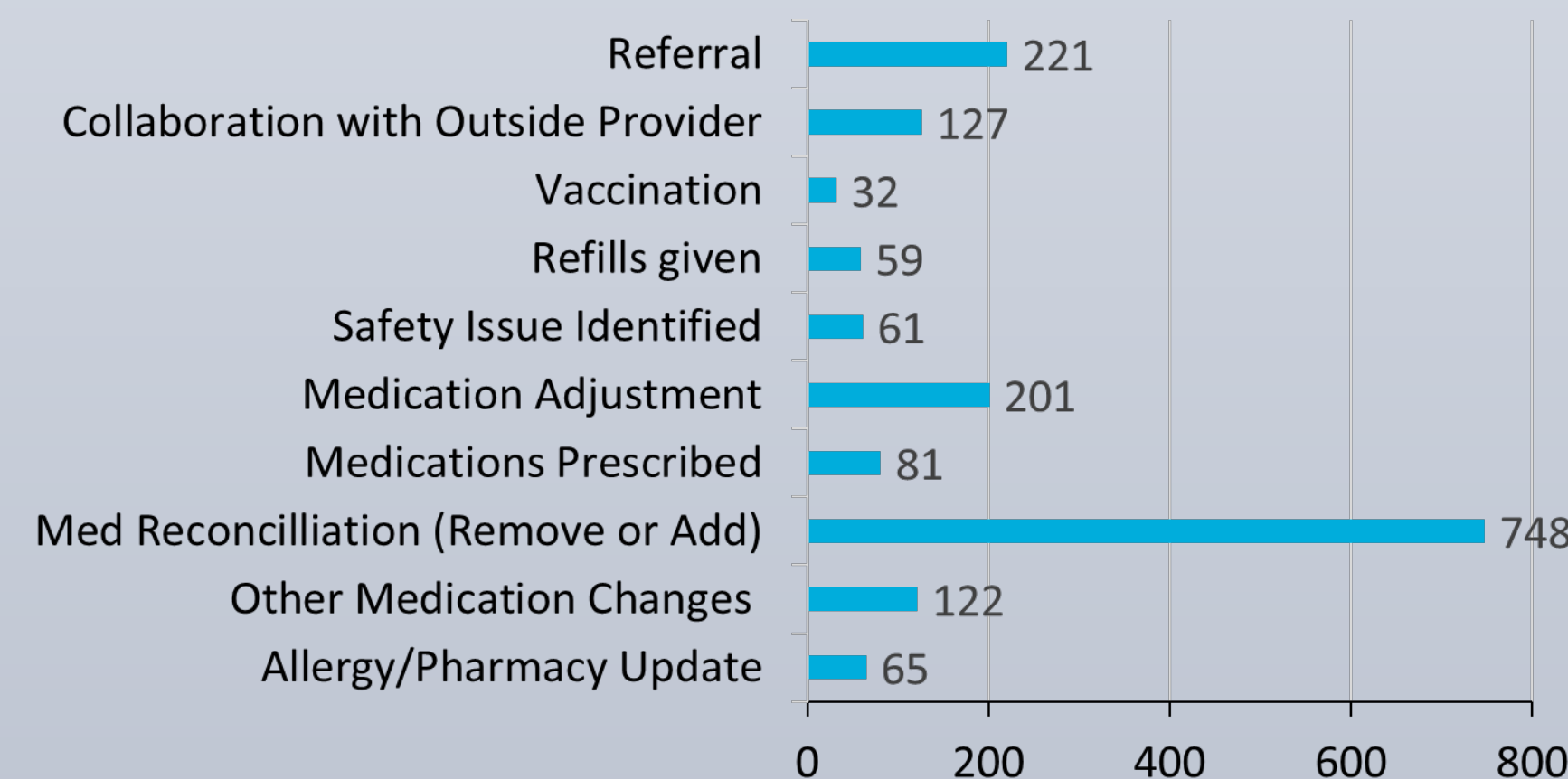
Outcomes

- A total of 196 patients seen from 3/2021 to 6/2023
- Total number of interventions provided = 1,717 (8.7 per patient)
- A total of 221 referrals were made

Outcomes



Types of Interventions/Referrals



Key Take-Aways

- Post-ICU follow up appointments decrease gaps in transitional healthcare
- Multidisciplinary appointment approach allows for comprehensive care management
- Provides validation for patients and caregivers
- No show rates are inherently high in this patient population
- Addition of RN Navigator role has increased continuity of care and decreased “no show” rate
- Future goal to expand across critical care sites

References

1. Iwashyna, Theodore J., et al. “The Population Burden of Long-Term Survivorship after Severe Sepsis among Older Americans.” *Journal of the American Geriatrics Society*, vol. 60, no. 6, 1 June 2012, pp. 1070–1077
2. Yende, Sachin, et al. “Long-Term Quality of Life among Survivors of Severe Sepsis.” *Critical Care Medicine*, vol. 44, no. 8, Aug. 2016, pp. 1461–1467,
3. Parker, Ann M., et al. “Posttraumatic Stress Disorder in Critical Illness Survivors.” *Critical Care Medicine*, vol. 43, no. 5, May 2015, pp. 1121–1129
4. Girard, Timothy D., et al. “Delirium as a Predictor of Long-Term Cognitive Impairment in Survivors of Critical Illness.” *Critical Care Medicine*, vol. 38, no. 7, July 2010, pp. 1513–1520
5. Norman, Brett C., et al. “Employment Outcomes after Critical Illness.” *Critical Care Medicine*, vol. 44, no. 11, Nov. 2016, pp. 2003–2009
6. Wake, S., and D. Kitchiner. “Post-Traumatic Stress Disorder after Intensive Care.” *BMJ*, vol. 346, no. may22 16, 22 May 2013, pp. f3232–f3232
7. Jones, Christina, et al. “Memory, Delusions, and the Development of Acute Posttraumatic Stress Disorder-Related Symptoms after Intensive Care.” *Critical Care Medicine*, vol. 29, no. 3, Mar. 2001, pp. 573–580

Acknowledgements

No one in a position to control the content of this educational activity has relevant financial relationships with ineligible companies.

For additional information, please contact either Sarah Solis (sarah.solis2@ohiohealth.com) or Angela Harding (angela.harding@ohiohealth.com)