

New Partnerships and Data Standardization Reduce PSI

Erin Duval, RN, BSN, MBA (Director of Quality and Care Transformation); Margaret Gurley, RN, BSN, MHA (Manager, Quality and Care Transformation); Elizabeth Thorn, PT, DPT, MHA (Senior Manager, Quality and Care Transformation)

OVERVIEW

Since 2019, NorthShore University HealthSystem has acquired more than 700 inpatient beds through partnerships with Swedish and Northwest Community Hospitals. The addition of comparative data to our enterprise data warehouse and analytics culture has allowed us to standardize scorecard measures and further scale our analytic capabilities into the hands of decision-makers and action-takers across our hospital system. Reviewing our patient safety indicators (PSI) in a multidisciplinary, standardized format and utilizing a national comparative database as our system-wide reporting tool has allowed us to benchmark competitive and significantly reduce our PSI 90 composite rate.

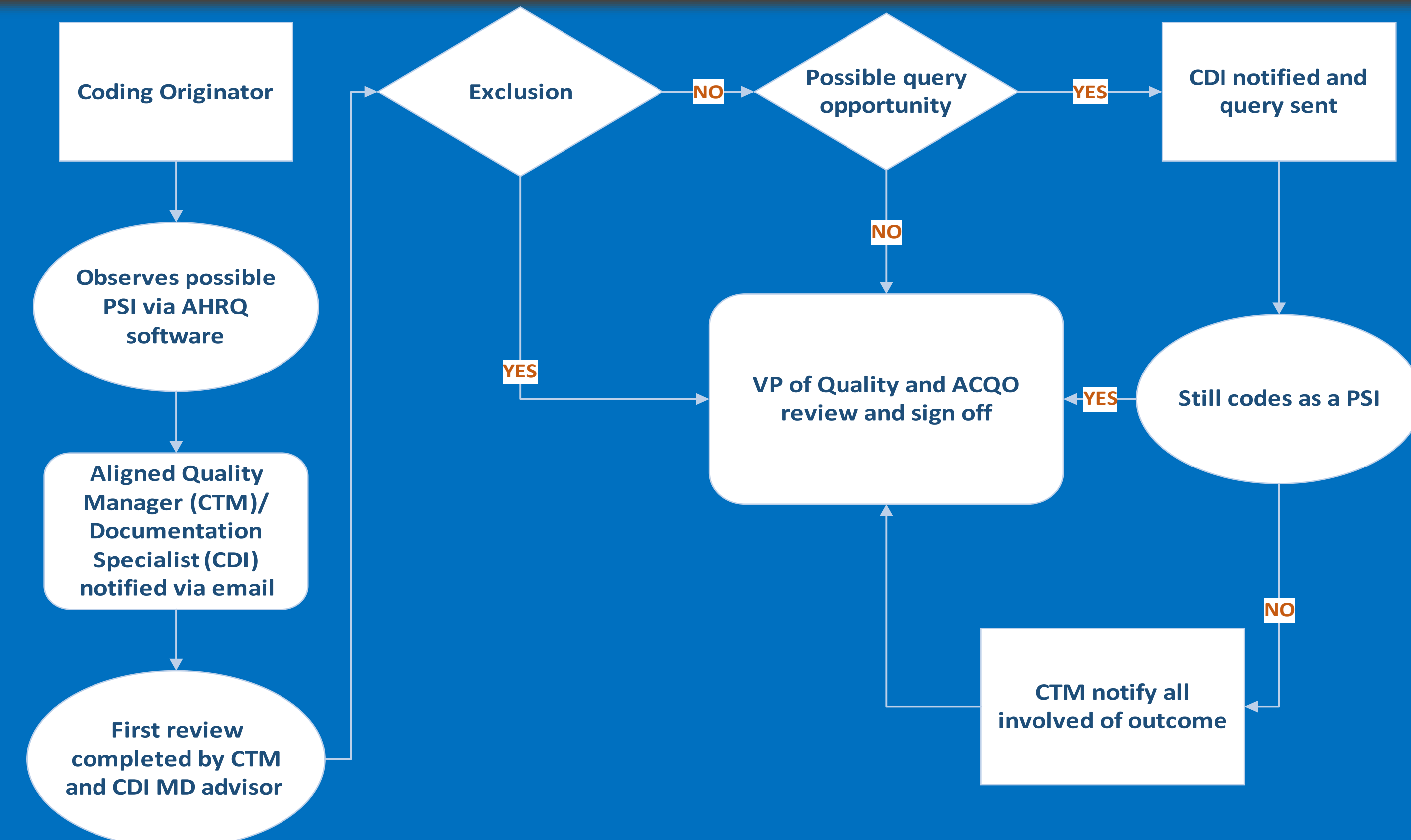
LEARNING OBJECTIVES

- Discuss implementation strategies of a multidisciplinary team approach to PSI review.
- Explain documentation standards to decrease present-on-admission injuries that contribute to false PSI.
- Outline distributed reports to standardize and release measures when merging new organizations' data and reporting structures.

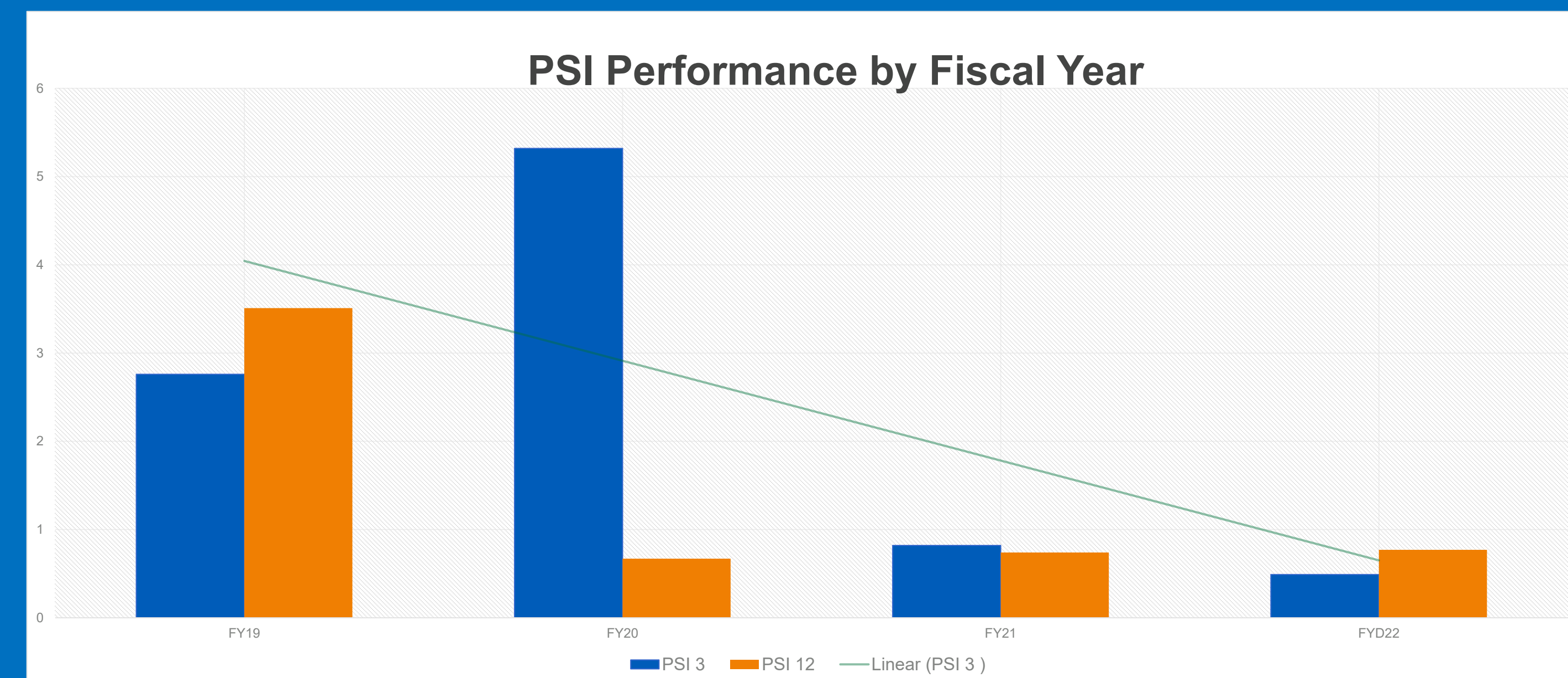
LESSONS LEARNED

- PSI 3 – Timely risk identification and implementation of prevention strategies, photographic capture of POA pressure injuries, and accurate and thorough documentation with respect to care delivered, patient specific factors, and wound etiology. Ongoing review of "events" as a means to educate and continue to improve patient care and safety.
- PSI 12 – Use of eCaprini risk tool to raise awareness of patient VTE risk while enhancing multidisciplinary prophylaxis management.
- PSI 90 – Robust understanding of definitions and weight differences in order to focus on the biggest drivers of improvement.
- Overall open communication and education about PSIs with providers to optimize procedures and patient care.

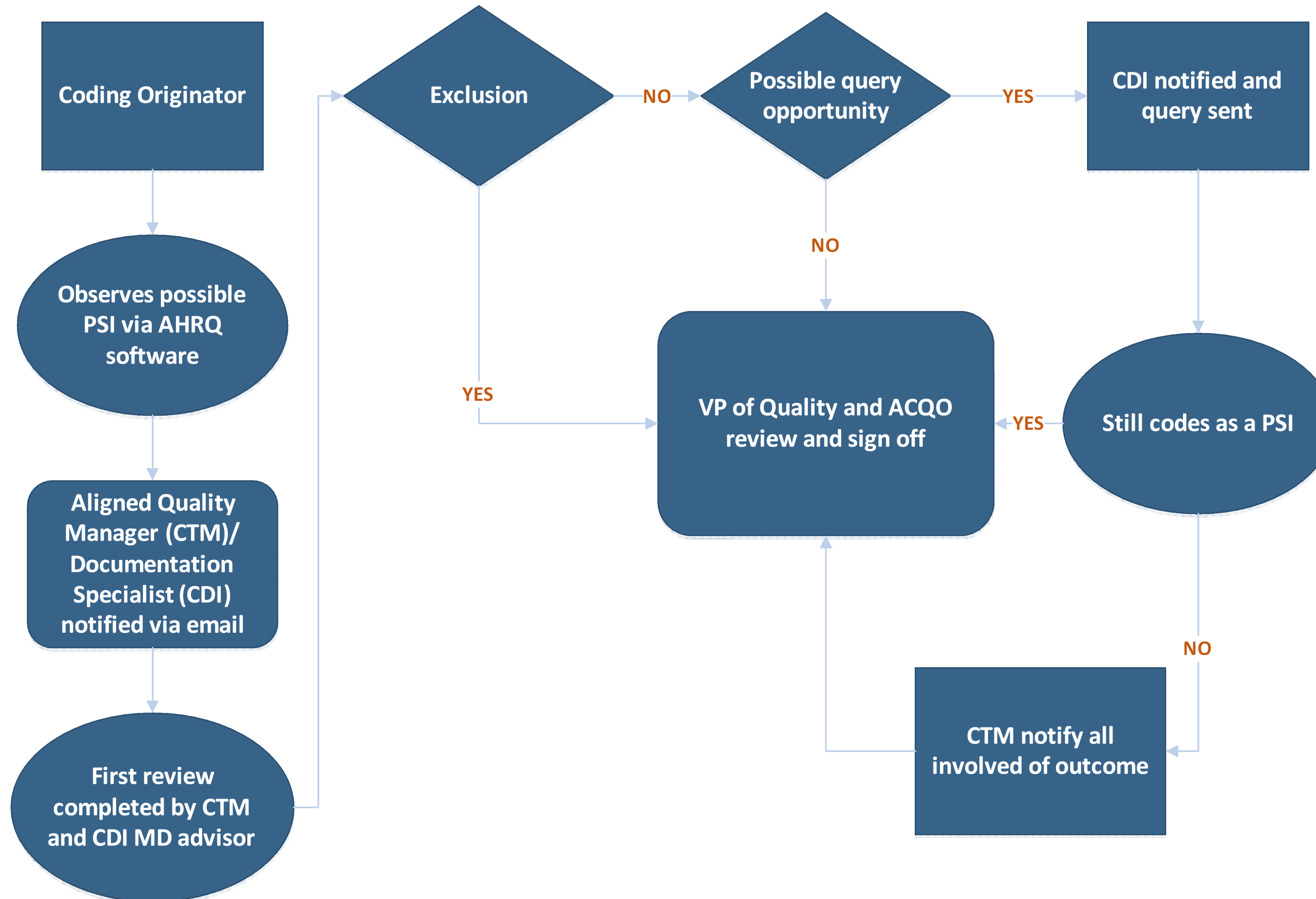
RESULTS



PSI Performance by Fiscal Year



Multidisciplinary PSI Review Process



Lessons Learned

PSI 3: Timely risk identification and implementation of prevention strategies, photographic capture of POA pressure injuries, and accurate and thorough documentation with respect to care delivered, patient specific factors, and wound etiology. Ongoing review of “events” as a means to educate and continue to improve patient care and safety.

PSI 12: Use of eCaprini risk tool to raise awareness of patient VTE risk while enhancing multidisciplinary prophylaxis management.

PSI 90: Robust understanding of definitions and weight differences in order to focus on biggest drivers of improvement.

Overall: Open communication and education about PSIs with providers to optimize procedures and patient care.

